

Forma do pavimento Térreo (Nível 15)
escala 1:50

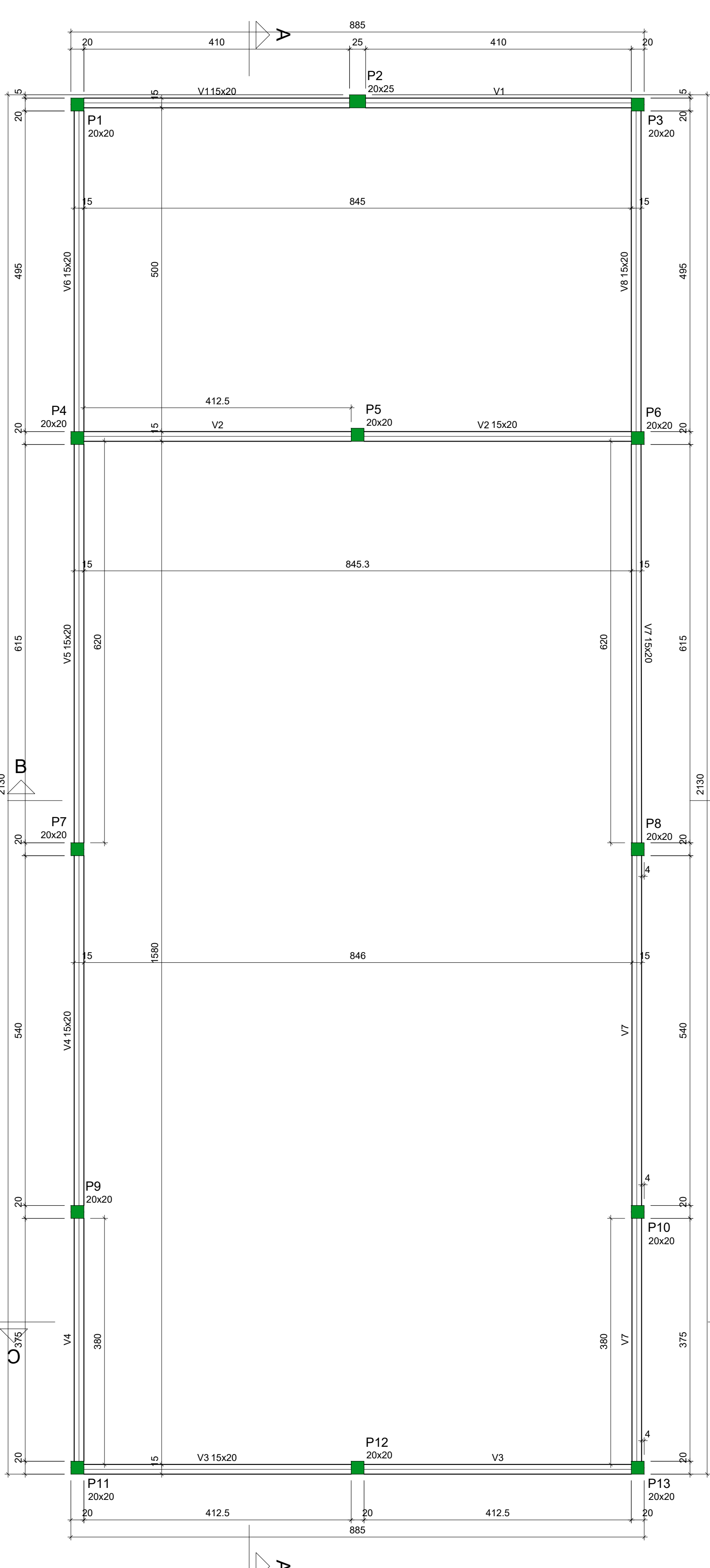
Vigas			
Nome	Seção (cm)	Elevação (cm)	Nível (cm)
V1	15x40	0	15
V2	15x40	0	15
V3	15x40	0	15
V4	15x40	0	15
V5	15x40	0	15
V6	15x40	0	15
V7	15x40	0	15
V8	15x40	0	15
V9	15x30	0	15

Características dos materiais	
fck (kgf/cm²)	Ecs (kgf/cm²)
250	241500

Pilares			
Nome	Seção (cm)	Elevação (cm)	Nível (cm)
P1	20x20	0	15
P2	20x25	0	15
P3	20x20	0	15
P4	20x20	0	15
P5	20x20	0	15
P6	20x20	0	15
P7	20x20	0	15
P8	20x20	0	15
P9	20x20	0	15
P10	20x20	0	15
P11	20x20	0	15
P12	20x20	0	15
P13	20x20	0	15

Legenda dos pilares	
	Pilar que passa

Legenda das vigas e paredes	
	Viga



Forma do pavimento Cinta Superior (Nível 315)
escala 1:50

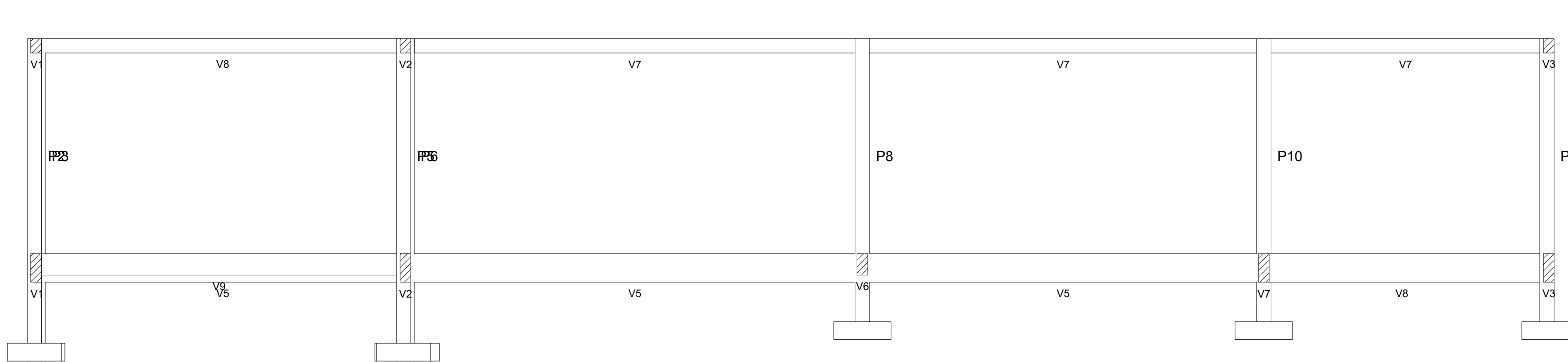
Vigas			
Nome	Seção (cm)	Elevação (cm)	Nível (cm)
V1	15x20	0	315
V2	15x20	0	315
V3	15x20	0	315
V4	15x20	0	315
V5	15x20	0	315
V6	15x20	0	315
V7	15x20	0	315
V8	15x20	0	315

Características dos materiais	
fck (kgf/cm²)	Ecs (kgf/cm²)
250	241500

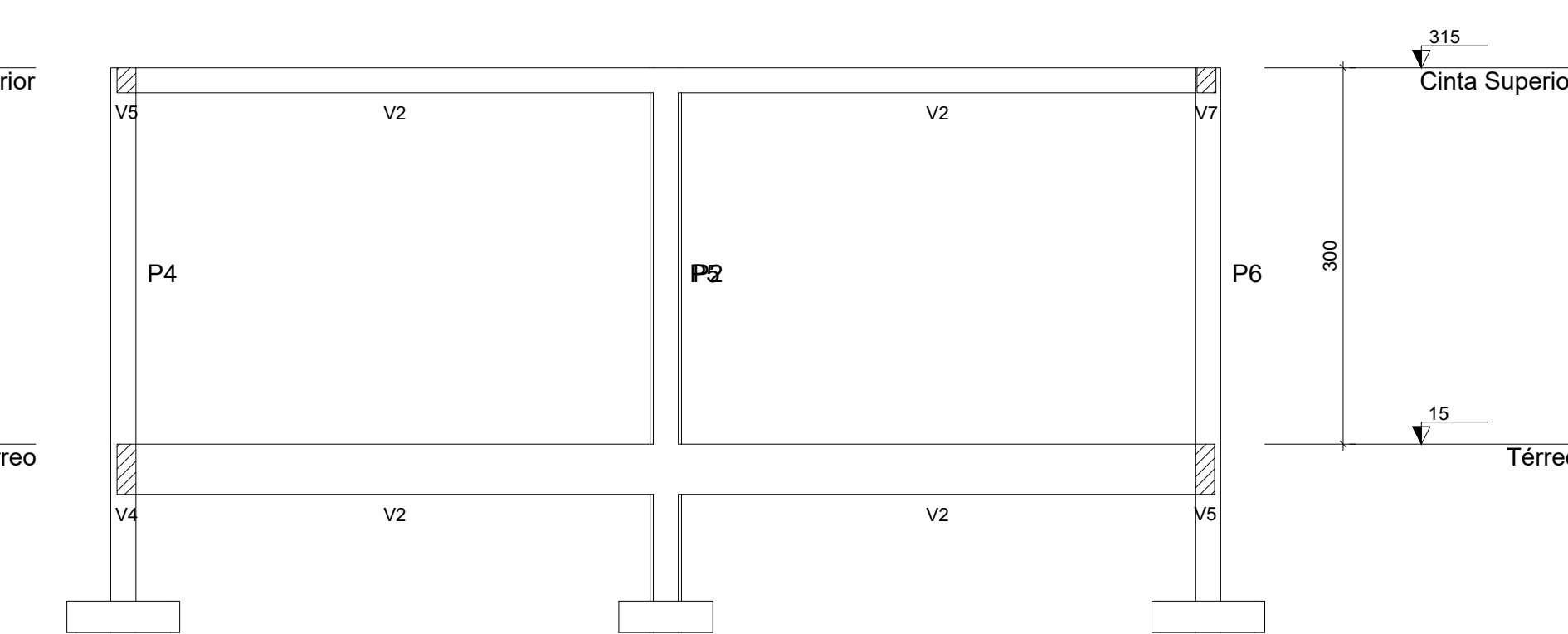
Pilares			
Nome	Seção (cm)	Elevação (cm)	Nível (cm)
P1	20x20	0	315
P2	20x25	0	315
P3	20x20	0	315
P4	20x20	0	315
P5	20x20	0	315
P6	20x20	0	315
P7	20x20	0	315
P8	20x20	0	315
P9	20x20	0	315
P10	20x20	0	315
P11	20x20	0	315
P12	20x20	0	315
P13	20x20	0	315

Legenda dos pilares	
	Pilar que morre

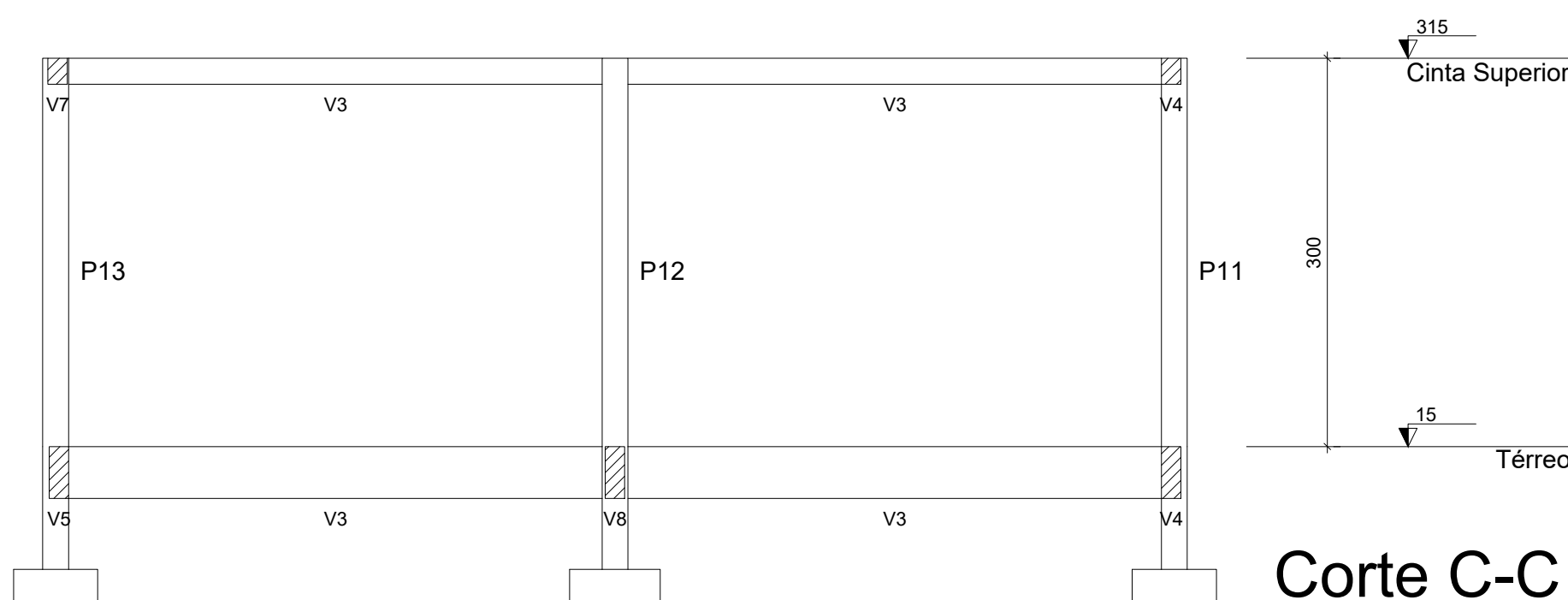
Legenda das vigas e paredes	
	Viga



Corte A-A
escala 1:50



Corte B-B
escala 1:50



Corte C-C
escala 1:50

PROJETO:
U.E HILTON LEITE DE CARVALHO

PROJETO TIPO: PROJETO DE INFRAESTRUTURA EDUCACIONAL

PROPRIETÁRIO:
NOME DO PROPRIETÁRIO
CPF.:

AUTOR DO PROJETO:
PHABULLO HUDSON SOUSA ARAUJO
CREA - 1918962669

RESPONSÁVEL TÉCNICO:
ARQUITETO / ENGENHEIRO
CAU / CREA

APROVAÇÕES:

OBSERVAÇÕES:

COORDENAÇÃO:

RESPONSÁVEL TÉCNICO:

PROPRIETÁRIO:
GOVERNO DO PIAUÍ

ENDEREÇO:
RUA SUCUPI, S/N, NAZARIA - PI

DESENHISTA:
PHABULLO HUDSON SOUSA ARAUJO

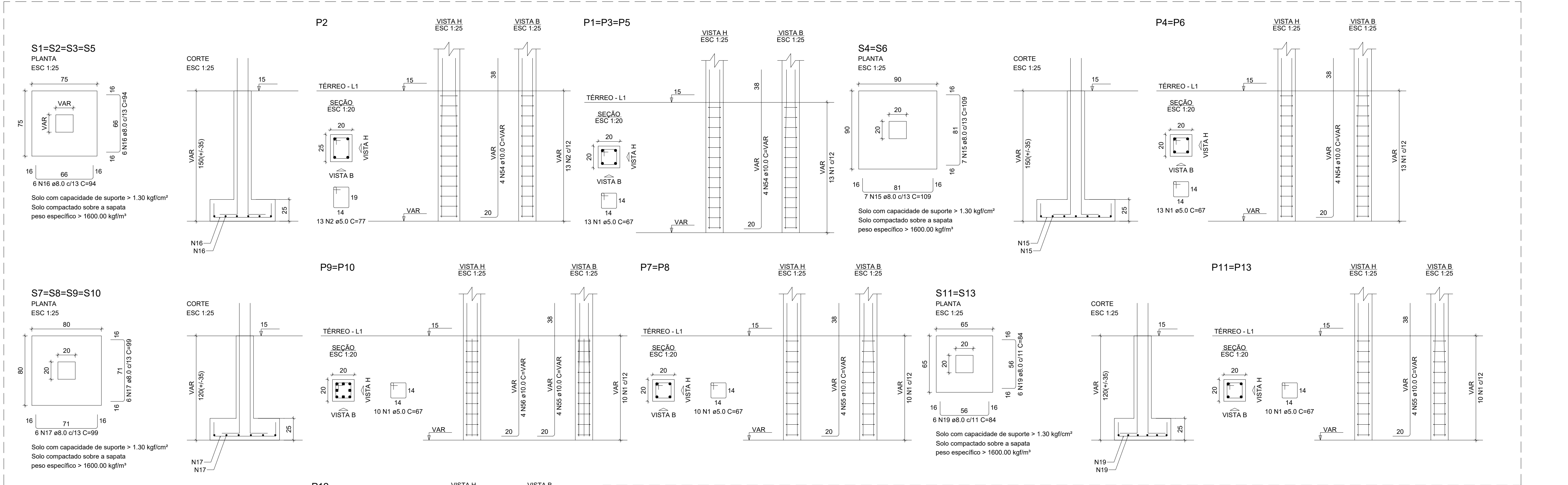
REVISÃO:

DATA:
11/07/21

ESCALA:
NO DESENHO

FORMATO:
A0 (841 x 1189)

CONTEÚDO:
PLANTA DE FORMA TÉRREO E SUPERIOR, CORTE AA, CORTE BB
CORTE CC.



RELAÇÃO DO AÇO						
ACO	N	DIAM (mm)	QUANT	C.UNIT (cm)	C.TOTAL (cm)	
CASO	1	5.0	434	67	29145	
	2	5.0	38	77	2926	
	3	5.0	112	61	19332	
	4	5.0	375	101	37875	
	5	5.0	285	105	30000	
	6	5.0	2	275	550	
	7	5.0	2	275	550	
	8	5.0	2	250	500	
	9	5.0	2	270	540	
	10	5.0	2	230	460	
CASO	11	5.0	80	81	7390	
	12	5.0	2	315	630	
	13	5.0	2	365	730	
	14	5.0	2	225	450	
	15	5.0	2	365	730	
	16	8.0	48	94	4512	
	17	8.0	46	94	4352	
	18	8.0	12	89	1068	
	19	8.0	24	84	2016	
	20	8.0	12	880	10560	
	21	8.0	2	902	1804	
	22	8.0	2	904	1808	
	23	8.0	2	904	1808	
	24	8.0	2	904	1808	
	25	8.0	2	904	1808	
	26	8.0	1	105	105	
	27	8.0	2	102	204	
	28	8.0	4	962	3848	
	29	8.0	2	905	1810	
	30	8.0	4	1158	4632	
	31	8.0	1	170	170	
	32	8.0	2	583	1166	
	33	8.0	4	335	1340	
	34	8.0	4	360	1440	
	35	8.0	2	315	630	
	36	8.0	2	380	760	
	37	8.0	2	433	866	
	38	8.0	1	310	310	
	39	8.0	1	175	175	
	40	8.0	2	588	1176	
	41	8.0	2	180	360	
	42	8.0	1	132	132	
	43	8.0	2	317	634	
	44	8.0	1	132	132	
	45	8.0	2	281	562	
	46	8.0	2	121	242	
	47	8.0	2	408	816	
	48	8.0	2	466	932	
	49	8.0	2	530	1060	
	50	8.0	2	181	362	
	51	8.0	2	181	362	
	52	8.0	2	181	362	
	53	10.0	62	507	15444	
	54	10.0	24	VAR	VAR	
	55	10.0	28	VAR	VAR	
	56	10.0	8	VAR	VAR	
	57	10.0	4	VAR	VAR	
	58	10.0	1	190	190	
	59	10.0	2	355	710	

RESUMO DO AÇO			
ACO	DIAM (mm)	C.TOTAL (m)	PESO + 10% (kg)
CASO	8.0	593.6	257.7
CASO	10.0	306.4	257.8
CASO	5.0	1011.5	171.5
PESO TOTAL (kg)			
CASO	465.5		
CASO	171.5		

Volume de concreto (C-20) = 10.60 m³
Área de forma = 158.75 m²

PROJETO:
U.E HILTON LEITE DE CARVALHO

PROJETO TIPO: PROJETO DE INFRAESTRUTURA EDUCACIONAL

PROPRIETÁRIO:
NOME DO PROPRIETÁRIO
CPF.:

AUTOR DO PROJETO:
PHABULO HUDSON SOUSA ARAUJO
CREA - 1918962669

RESPONSÁVEL TÉCNICO:
ARQUITETO / ENGENHEIRO
CAU / CREA

APROVAÇÕES:

OBSERVAÇÕES:

COORDENAÇÃO:

RESPONSÁVEL TÉCNICO:

PROPRIETÁRIO:
GOVERNO DO PIAUI

ENDEREÇO:
RUA SUCUPI, S/N, NAZARIA - PI

DESENHISTA:
PHABULO HUDSON SOUSA ARAUJO

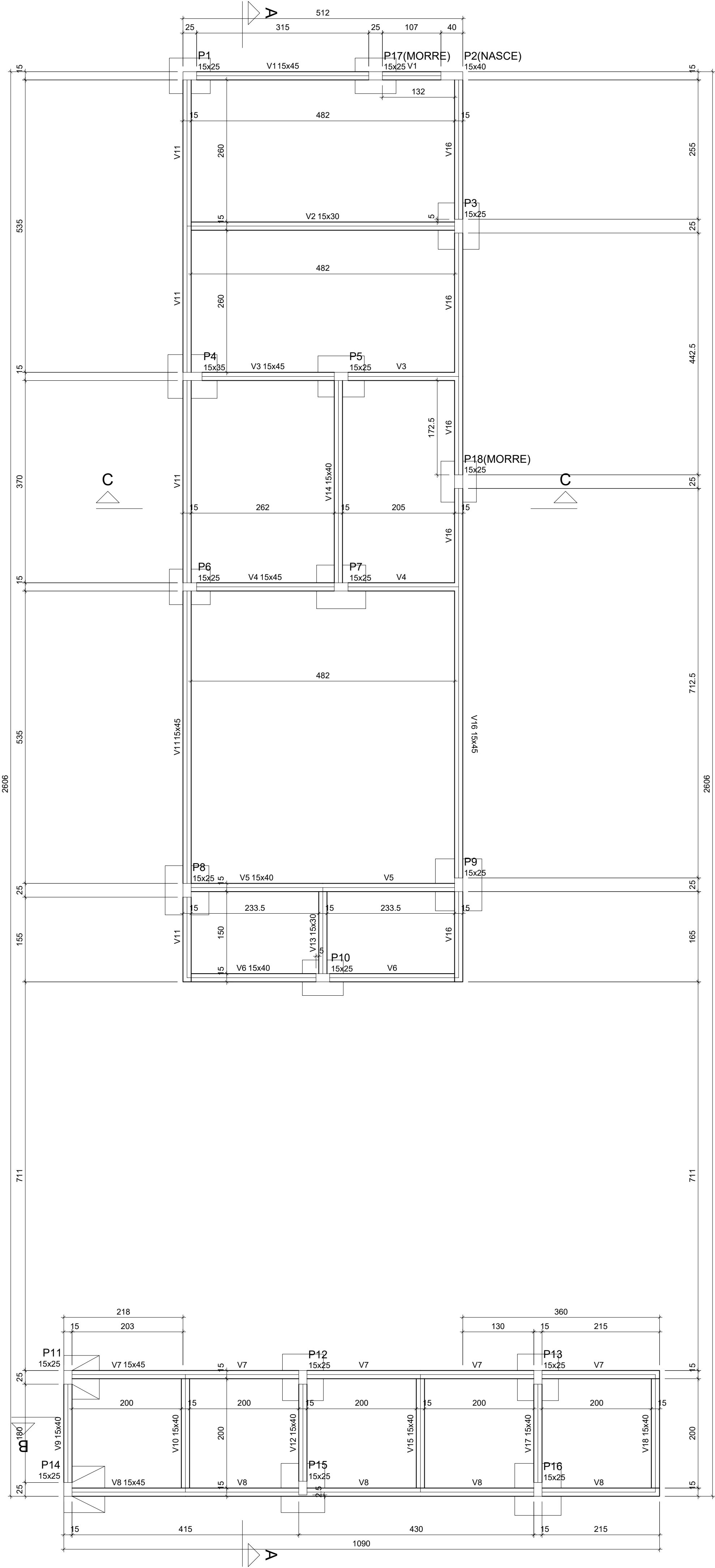
REVISÃO:

DATA:
11/07/21

ESCALA:
NO DESENHO

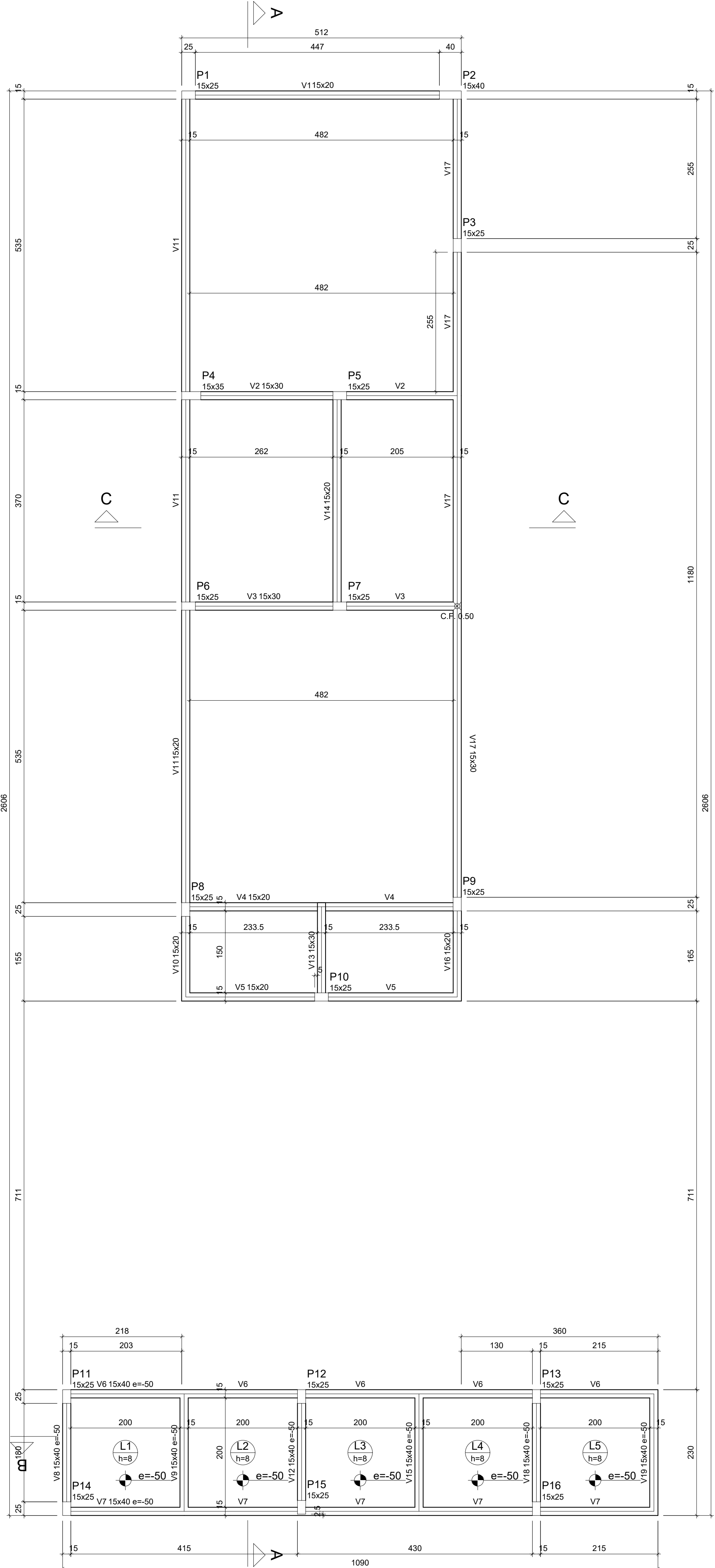
FORMATO:
A0 (841 x 1189)

CONTEÚDO:
DETALHAMENTO DE SAPATAS, VIGAS TÉRREO, PILARES E VIGA SUPERIOR 01-02.



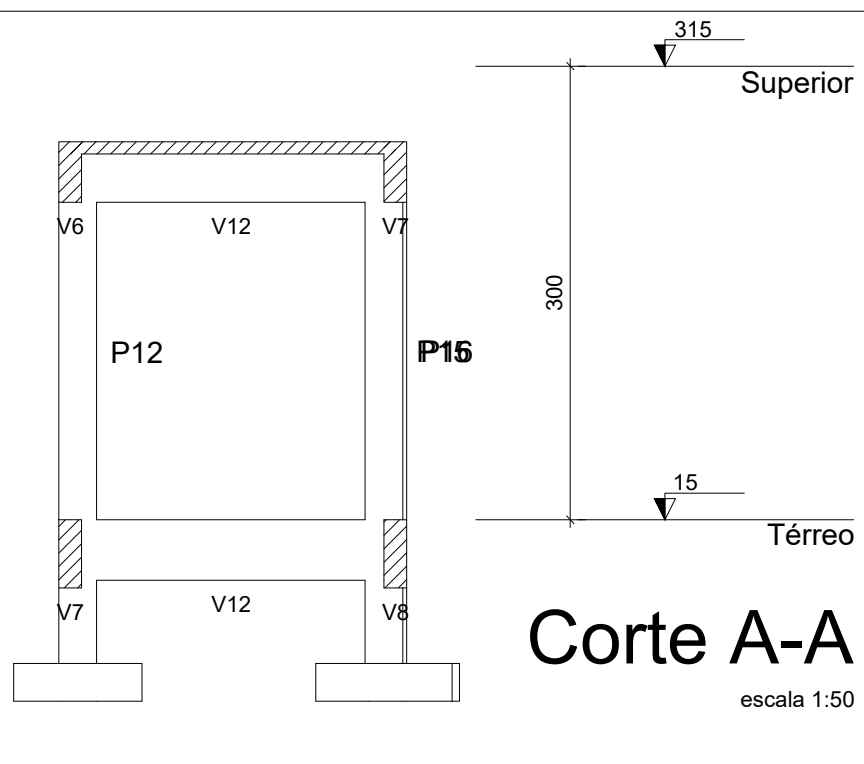
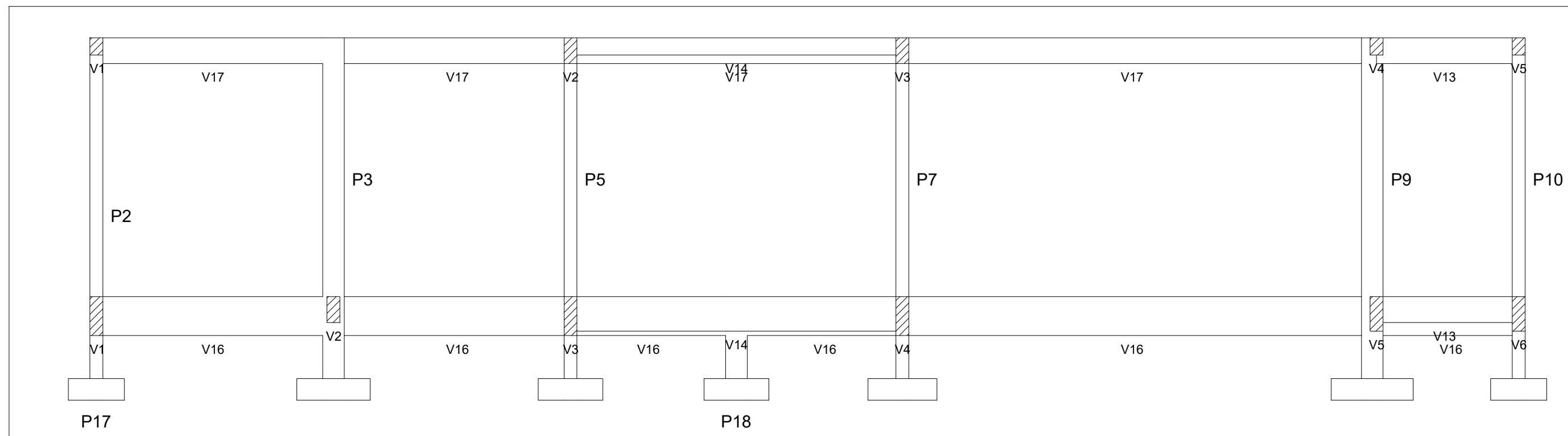
Forma do pavimento Térreo (Nível 15)

escala 1:50



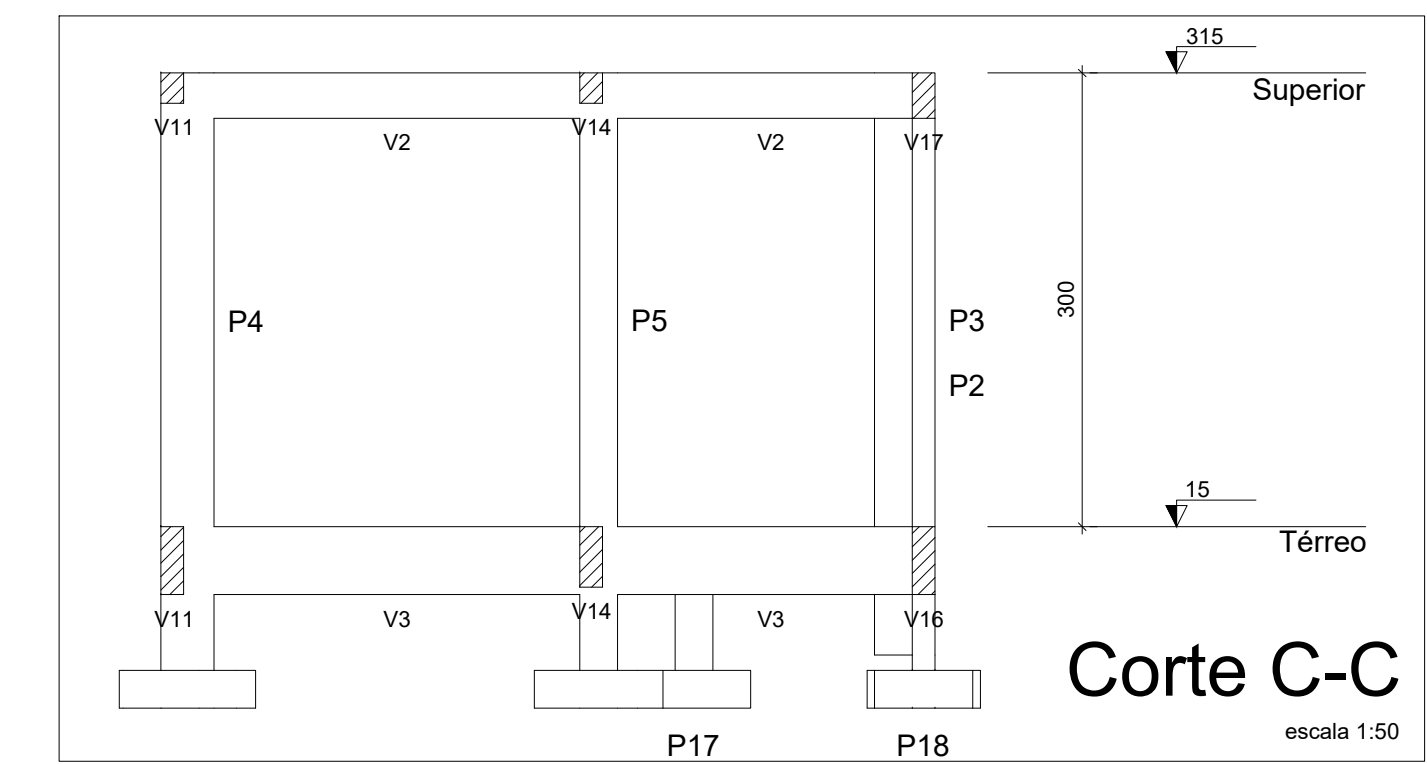
Forma do pavimento Superior (Nível 315)

escala 1:50



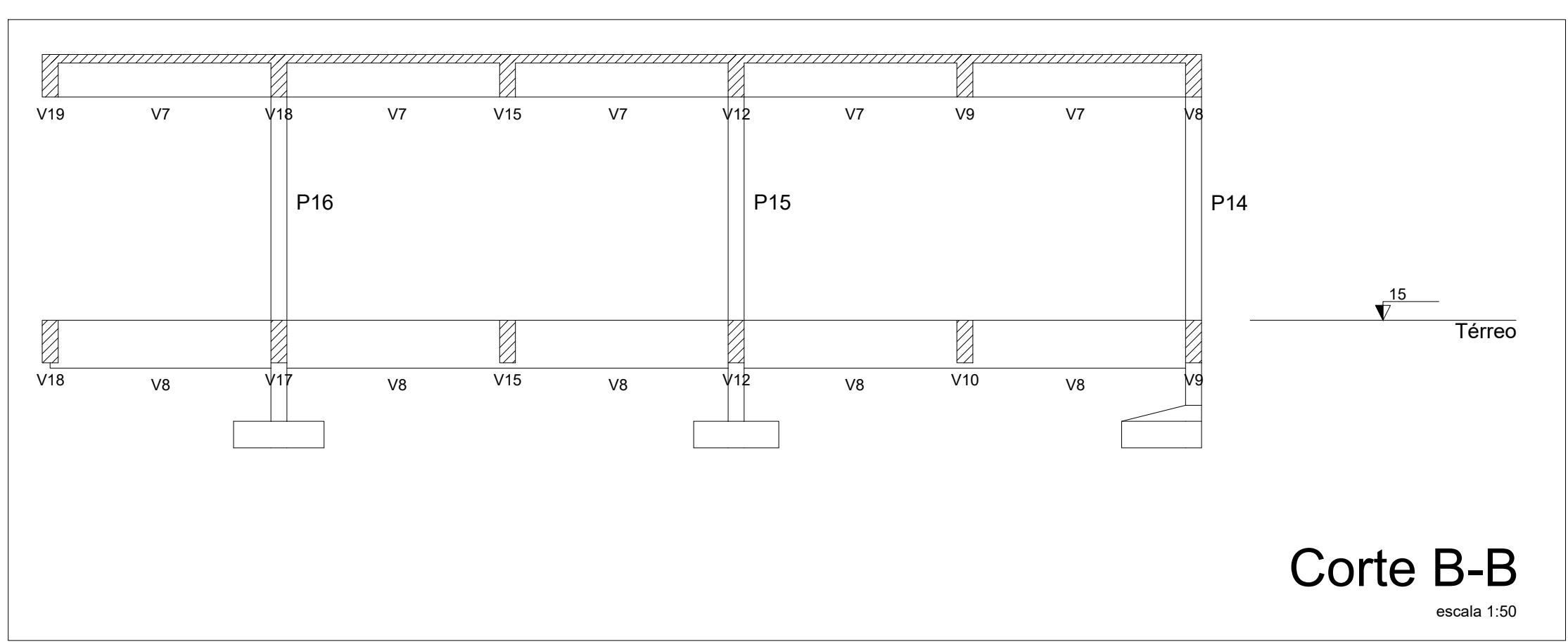
Corte A-A

escala 1:50



Corte C-C

escala 1:50



Corte B-B

escala 1:50

Vigas			
Nome	Seção (cm)	Elevação (cm)	Nível (cm)
V1	15x45	0	15
V2	15x30	0	15
V3	15x45	0	15
V4	15x45	0	15
V5	15x40	0	15
V6	15x40	0	15
V7	15x45	0	15
V8	15x45	0	15
V9	15x40	0	15
V10	15x40	0	15
V11	15x45	0	15
V12	15x40	0	15
V13	15x30	0	15
V14	15x40	0	15
V15	15x40	0	15
V16	15x45	0	15
V17	15x40	0	15
V18	15x40	0	15

Lajes			
Nome	Tipo	Altura (cm)	Elevação (cm)
L1	Maciça	8	-50
L2	Maciça	8	-50
L3	Maciça	8	-50
L4	Maciça	8	-50
L5	Maciça	8	-50

Características dos materiais			
fck	Ecs		
(kgf/cm²)	(kgf/cm²)		
250	241500		

Pilares			
Nome	Seção (cm)	Elevação (cm)	Nível (cm)
P1	15x25	0	315
P2	15x40	0	315
P3	15x25	0	315
P4	15x40	0	315
P5	15x25	0	315
P6	15x25	0	315
P7	15x25	0	315
P8	15x25	0	315
P9	15x25	0	315
P10	15x25	0	315
P11	15x25	-50	265
P12	15x25	-50	265
P13	15x25	-50	265
P14	15x25	-50	265
P15	15x25	-50	265
P16	15x25	-50	265

PROJETO:
U.E HILTON LEITE DE CARVALHO

PROJETO TIPO: PROJETO DE INFRAESTRUTURA EDUCACIONAL

PROPRIETÁRIO:
NOME DO PROPRIETÁRIO
CPF.:

AUTOR DO PROJETO:
PHABULLO HUDSON SOUSA ARAUJO
CREA - 1918962669

RESPONSÁVEL TÉCNICO:
ARQUITETO / ENGENHEIRO
CAU / CREA

APROVAÇÕES:

OBSERVAÇÕES:

COORDENAÇÃO:

RESPONSÁVEL TÉCNICO:

PROPRIETÁRIO:
GOVERNO DO PIAUÍ

ENDEREÇO:
RUA SUCUPI, S/N, NAZARIA - PI

DESENHISTA:
PHABULLO HUDSON SOUSA ARAUJO

REVISÃO:

DATA:
11/07/21

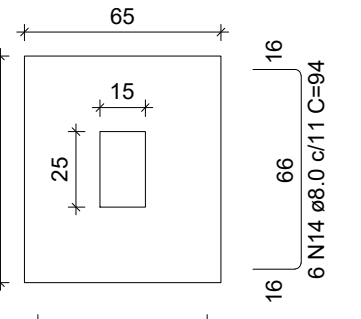
ESCALA:
NO DESENHO

FORMATO:
A0 (841 x 1189)

CONTEÚDO:
PLANTA DE FORMA SUPERIOR.

S1=S6=S10=S17=S18

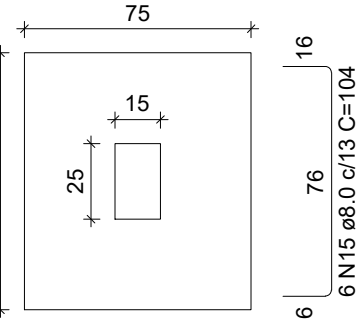
PLANTA
ESC 1:25



Solo com capacidade de suporte > 1.30 kgf/cm²
Solo compactado sobre a sapata
peso específico > 1600.00 kgf/m³

S3=S5=S12=S13

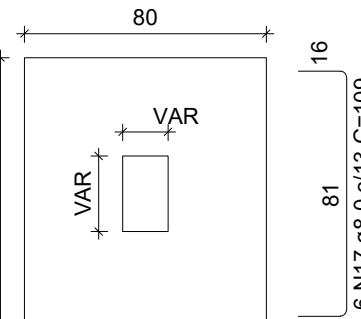
PLANTA
ESC 1:25



Solo com capacidade de suporte > 1.30 kgf/cm²
Solo compactado sobre a sapata
peso específico > 1600.00 kgf/m³

S4=S7=S8=S15

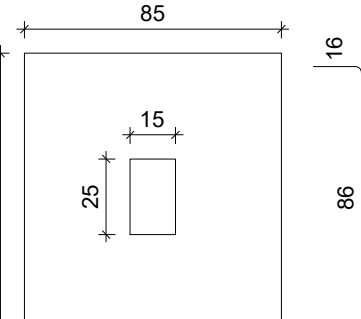
PLANTA
ESC 1:25



Solo com capacidade de suporte > 1.30 kgf/cm²
Solo compactado sobre a sapata
peso específico > 1600.00 kgf/m³

S9=S16

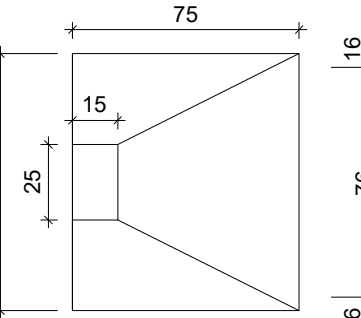
PLANTA
ESC 1:25



Solo com capacidade de suporte > 1.30 kgf/cm²
Solo compactado sobre a sapata
peso específico > 1600.00 kgf/m³

S14

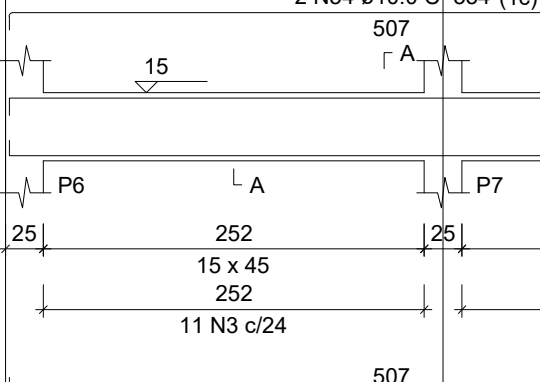
PLANTA
ESC 1:25



Solo com capacidade de suporte > 1.30 kgf/cm²
Solo compactado sobre a sapata
peso específico > 1600.00 kgf/m³

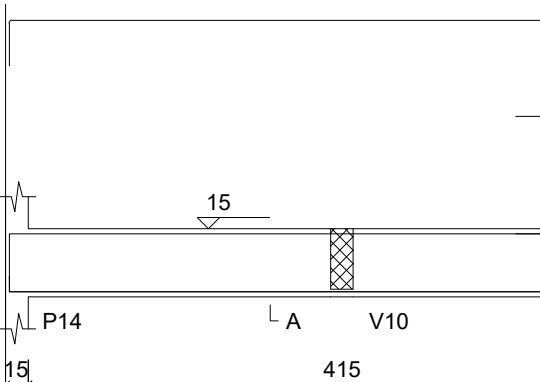
V4

ESC 1:50



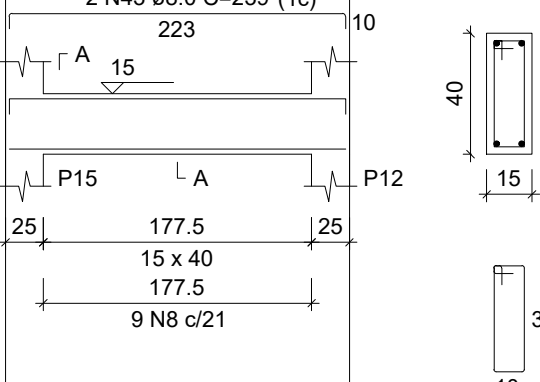
V8

ESC 1:50



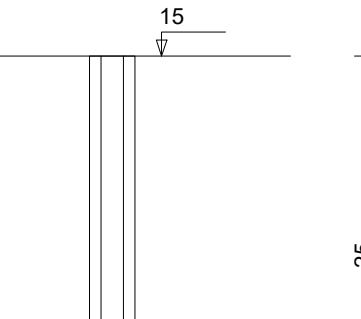
V12

ESC 1:50



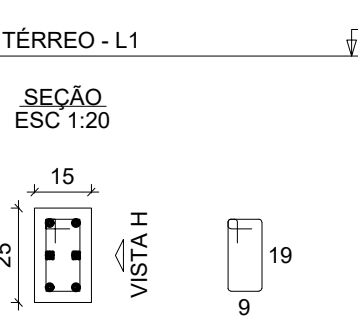
P1

CORTE
ESC 1:25



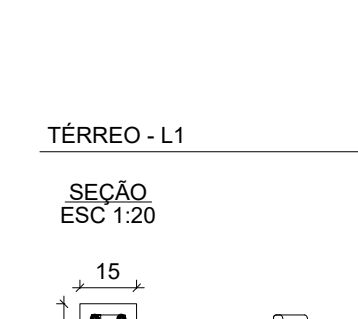
P3=P5=P12

CORTE
ESC 1:25



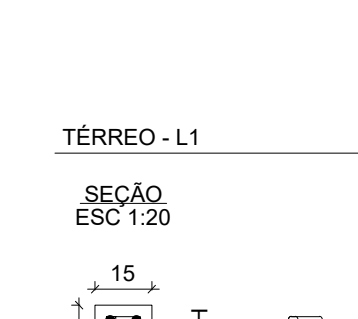
P4

CORTE
ESC 1:25



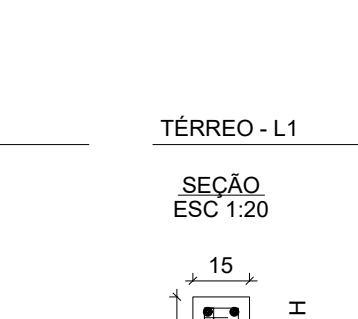
P16

CORTE
ESC 1:25



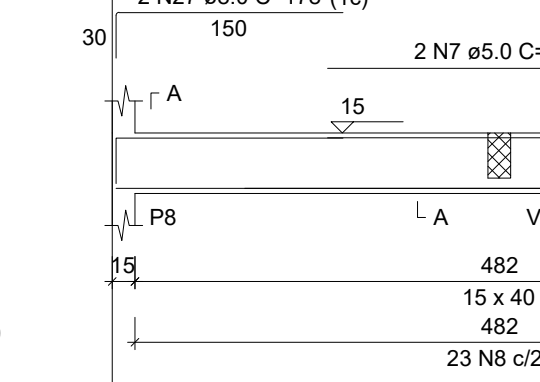
P14

CORTE
ESC 1:25



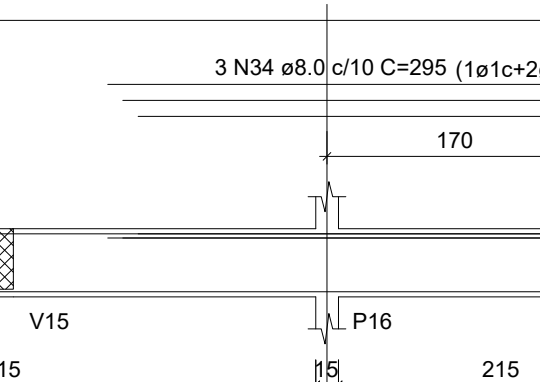
V5

ESC 1:50



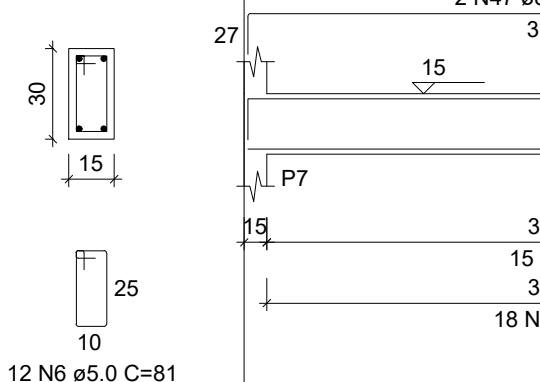
V9

ESC 1:50



V13

ESC 1:50



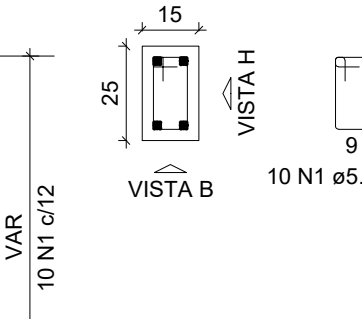
V14

ESC 1:50



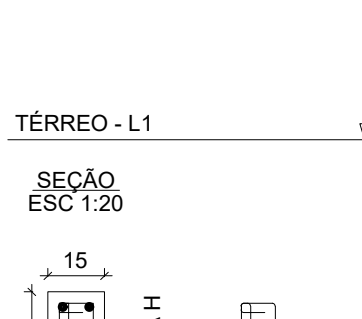
P17=P18

TERREO - L1



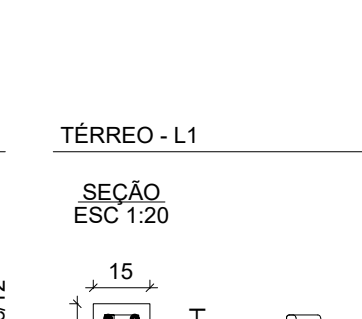
P13

TERREO - L1



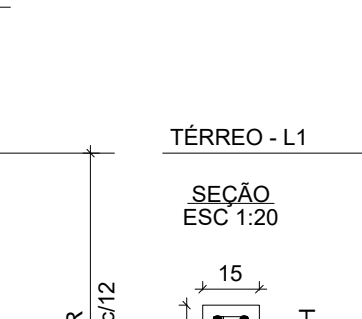
P7=P15

TERREO - L1



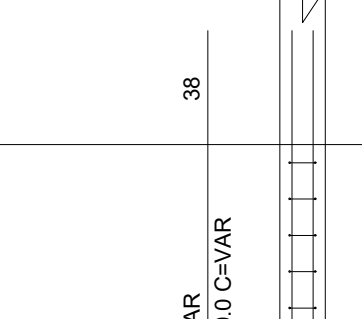
P9

TERREO - L1



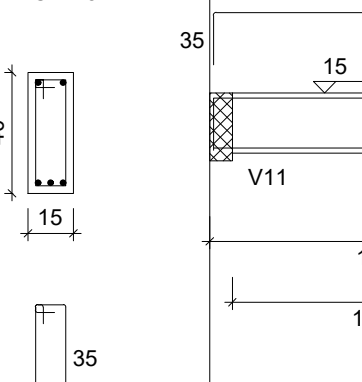
V1

ESC 1:50



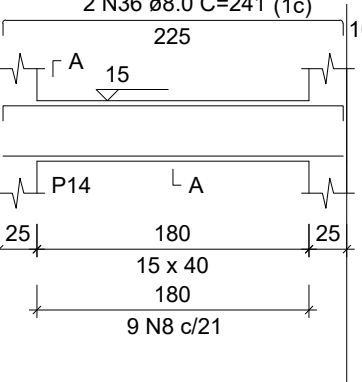
V6

ESC 1:50



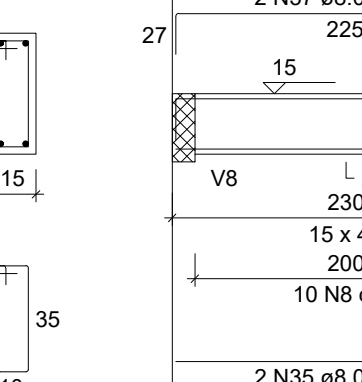
V9

ESC 1:50



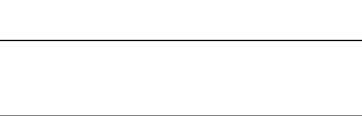
V10

ESC 1:50



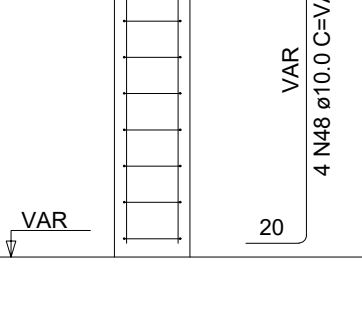
V15

ESC 1:50



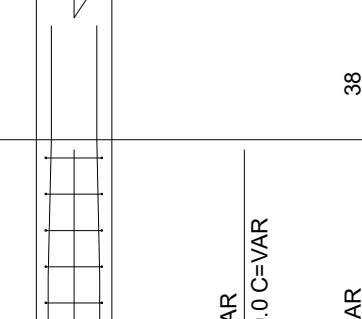
P6=P10

TERREO - L1



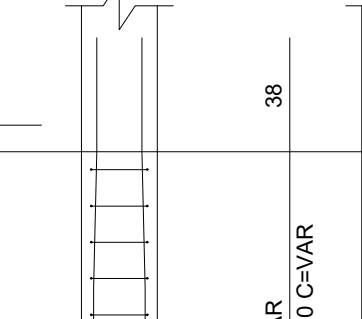
P8

TERREO - L1



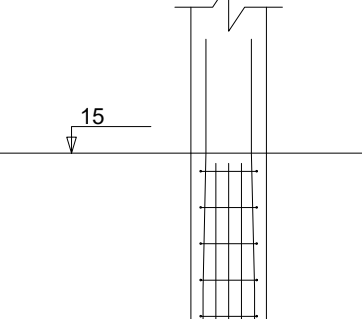
P11

TERREO - L1



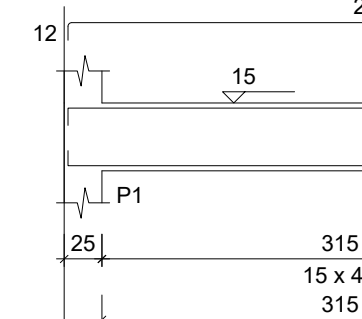
P17

TERREO - L1



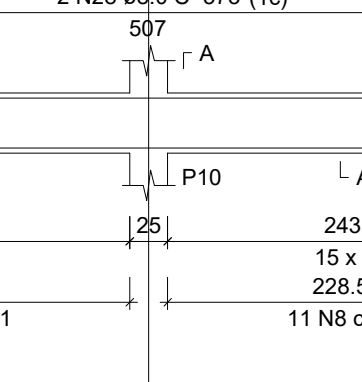
V2

ESC 1:50



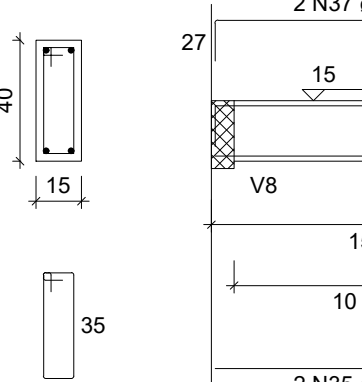
V7

ESC 1:50



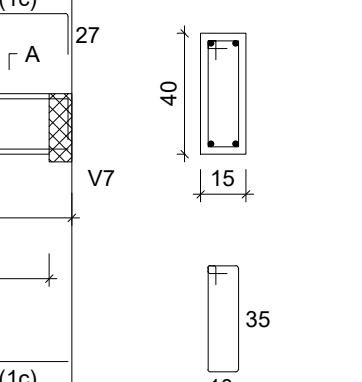
V11

ESC 1:50



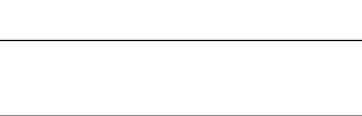
V16

ESC 1:50



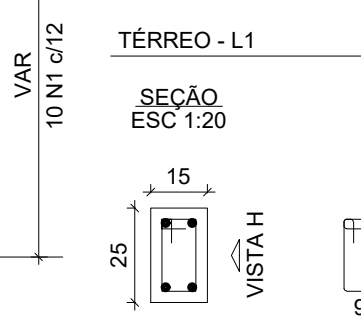
V19

ESC 1:50



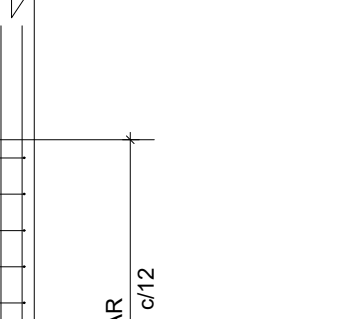
P17=P18

TERREO - L1



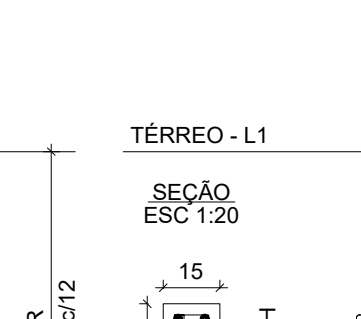
P13

TERREO - L1



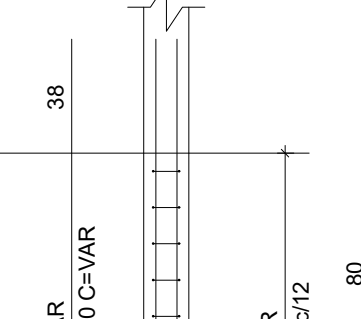
P7=P15

TERREO - L1



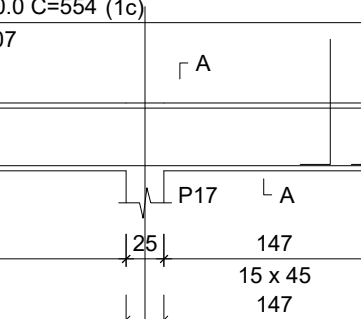
P9

TERREO - L1



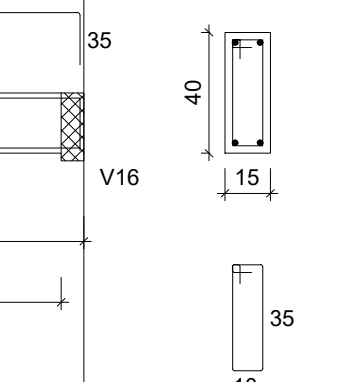
V1

ESC 1:50



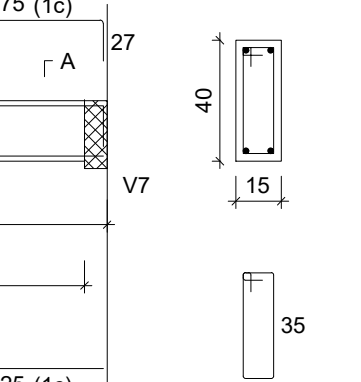
V6

ESC 1:50



V9

ESC 1:50



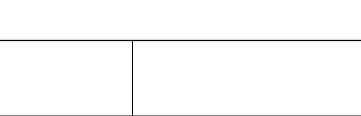
V10

ESC 1:50



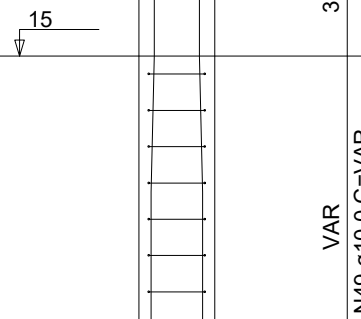
V15

ESC 1:50



P6=P10

TERREO - L1



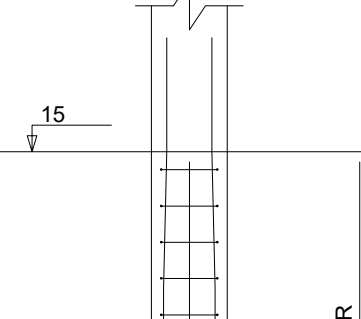
P8

TERREO - L1



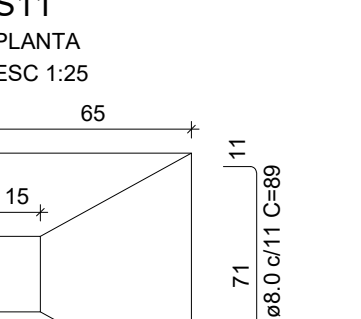
P11

TERREO - L1



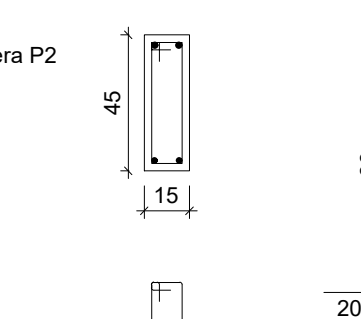
P17

TERREO - L1



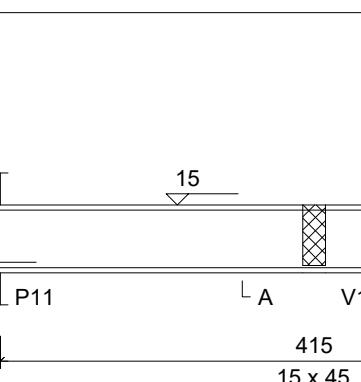
V2

ESC 1:50



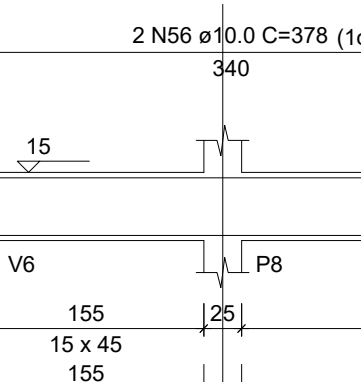
V7

ESC 1:50



V11

ESC 1:50



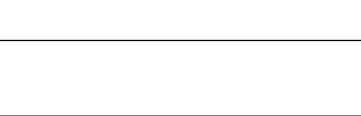
V16

ESC 1:50



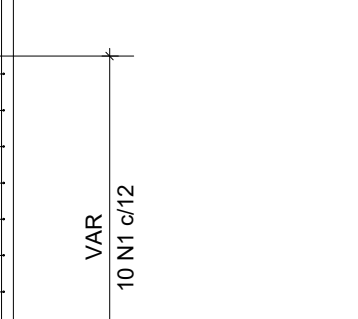
V19

ESC 1:50



P17=P18

TERREO - L1



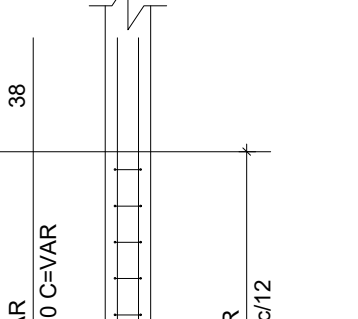
P13

TERREO - L1



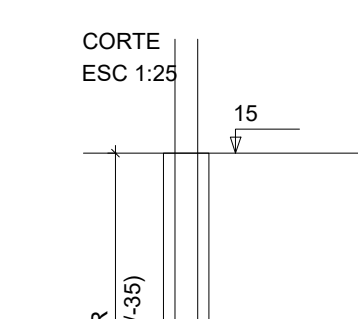
P7=P15

TERREO - L1



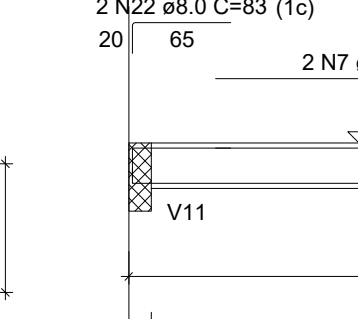
P9

TERREO - L1



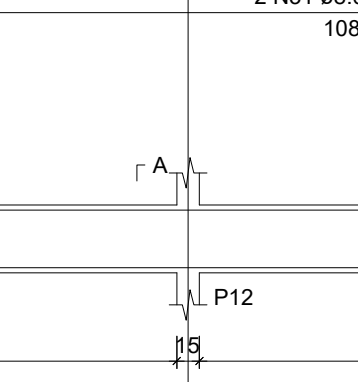
V1

ESC 1:50



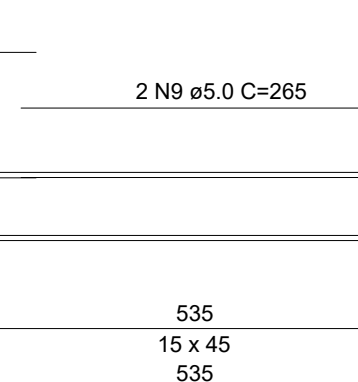
V6

ESC 1:50



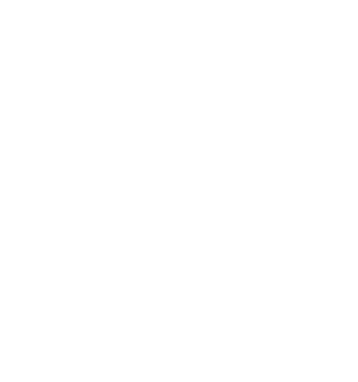
V9

ESC 1:50



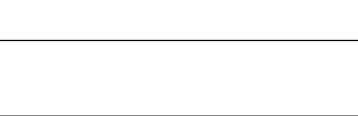
V10

ESC 1:50



V15

ESC 1:50



P6=P10

TERREO - L1



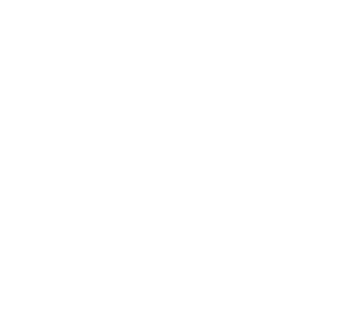
P8

TERREO - L1



P11

TERREO - L1



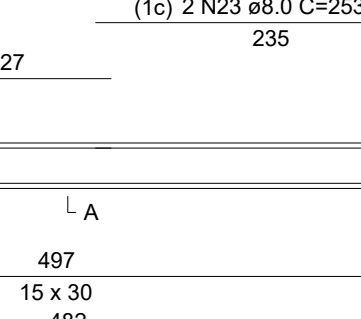
P17

TERREO - L1



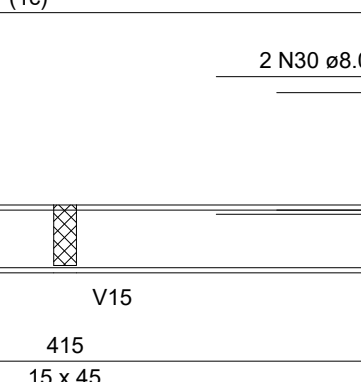
V2

ESC 1:50



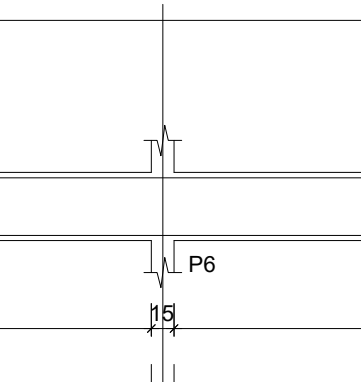
V7

ESC 1:50



V11

ESC 1:50



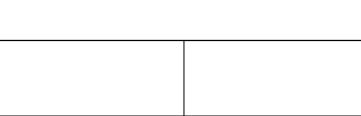
V16

ESC 1:50



V19

ESC 1:50



P17=P18

TERREO - L1



P13

TERREO - L1



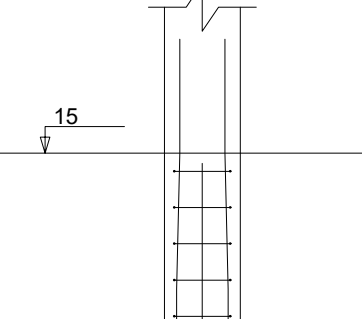
P7=P15

TERREO - L1



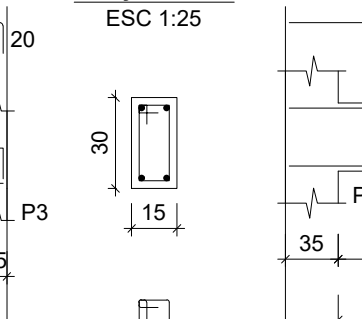
P9

TERREO - L1



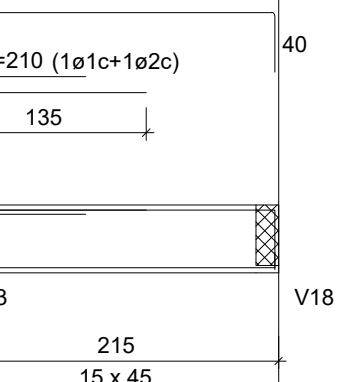
V1

ESC 1:50



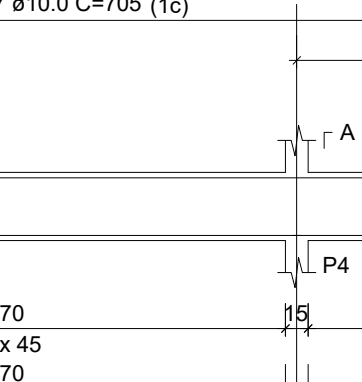
V6

ESC 1:50



V9

ESC 1:50



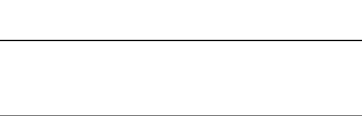
V10

ESC 1:50



V15

ESC 1:50



P6=P10

TERREO - L1



P8

TERREO - L1



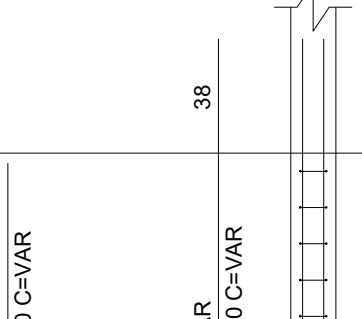
P11

TERREO - L1



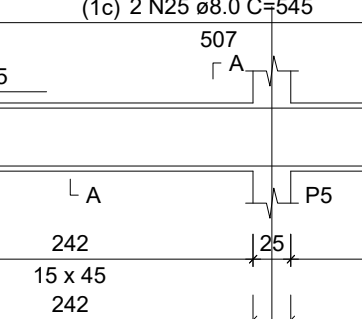
P17

TERREO - L1



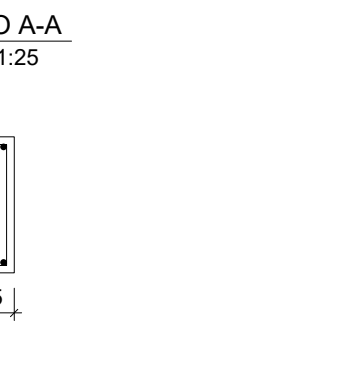
V2

ESC 1:50



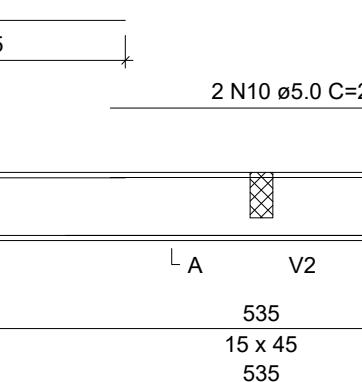
V7

ESC 1:50



V11

ESC 1:50



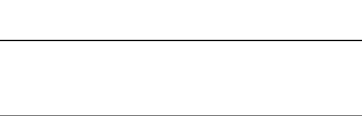
V16

ESC 1:50



V19

ESC 1:50



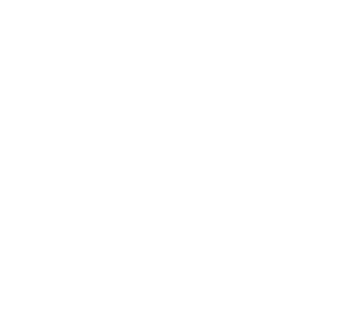
P17=P18

TERREO - L1



P13

TERREO - L1



P7=P15

TERREO - L1



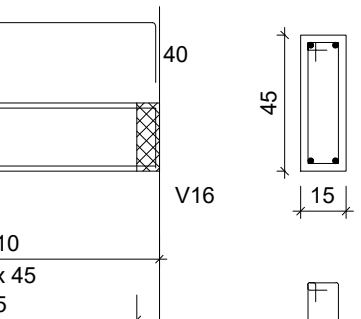
P9

TERREO - L1



V1

ESC 1:50



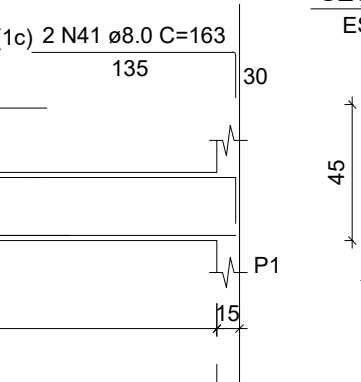
V6

ESC 1:50



V9

ESC 1:50



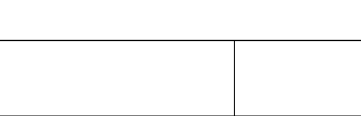
V10

ESC 1:50



V15

ESC 1:50

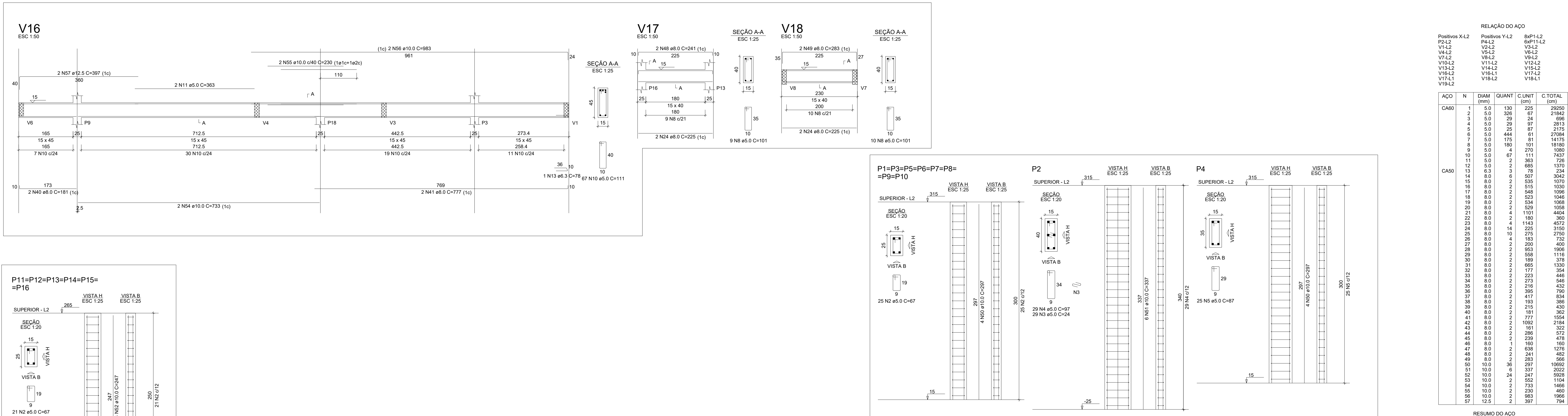


P6=P10

TERREO - L1



P8



RELAÇÃO DO AÇO				
Posições X-L2	Posições Y-L2	8xP1-L2		
V2-L2	P4-L2	8xP1-L2		
V4-L2	V2-L2	V3-L2		
V6-L2	V4-L2	V5-L2		
V8-L2	V6-L2	V7-L2		
V10-L2	V8-L2	V11-L2		
V12-L2	V10-L2	V13-L2		
V14-L2	V12-L2	V15-L2		
V16-L2	V14-L2	V17-L2		
V18-L2	V16-L2	V19-L2		
AÇO	N	DIAM (mm)	QUANT	C TOTAL (cm)
CA80	1	5.0	130	225
	2	5.0	326	67
	3	5.0	29	24
	4	5.0	29	97
	5	5.0	25	87
	6	5.0	444	61
	7	5.0	175	81
	8	5.0	190	101
	9	5.0	270	1080
	10	5.0	67	111
CA50	11	5.0	2	363
	12	5.0	2	685
	13	6.3	3	78
	14	8.0	3	607
	15	8.0	2	535
	16	8.0	2	915
	17	8.0	2	548
	18	8.0	2	525
	19	8.0	2	534
	20	8.0	2	525
	21	8.0	4	1101
	22	8.0	14	180
	23	8.0	4	1143
	24	8.0	225	3150
	25	8.0	10	275
	26	8.0	4	183
	27	8.0	2	200
	28	8.0	2	863
	29	8.0	2	568
	30	8.0	2	189
	31	8.0	2	665
	32	8.0	2	177
	33	8.0	2	223
	34	8.0	2	273
	35	8.0	2	215
	36	8.0	2	365
	37	8.0	2	417
	38	8.0	2	183
	39	8.0	2	215
	40	8.0	2	191
	41	8.0	2	777
	42	8.0	2	1002
	43	8.0	2	161
	44	8.0	2	295
	45	8.0	2	239
	46	8.0	2	241
	47	8.0	2	638
	48	8.0	2	482
	49	8.0	2	283
	50	10.0	36	1680
	51	10.0	8	337
	52	10.0	247	5929
	53	10.0	2	552
	54	10.0	2	733
	55	10.0	2	230
	56	10.0	2	883
	57	12.5	2	397
RESUMO DO AÇO				
AÇO	DIAM (mm)	C TOTAL (m)	PESO + 10% (kg)	
CA50	6.3	2.3	0.6	
	8.0	426.8	185.3	
	10.0	258.4	100.3	
CA80	12.5	7.9	8.4	
	5.0	1268.3	215	
PESO TOTAL (kg)				
CA50		354.6		
CA80		215		
Volume de concreto (C-25) = 9.33 m³				
Área de forma = 154.94 m²				



PROJETO:
U.E HILTON LEITE DE CARVALHO

PROJETO TIPO: PROJETO DE INFRAESTRUTURA EDUCACIONAL

PROPRIETÁRIO:
NOME DO PROPRIETÁRIO
CPF.:

AUTOR DO PROJETO:
PHABULLO HUDSON SOUSA ARAUJO
CREA - 1918962669

RESPONSÁVEL TÉCNICO:
ARQUITETO / ENGENHEIRO
CAU / CREA

APROVAÇÕES:

OBSERVAÇÕES:

COORDENAÇÃO:

RESPONSÁVEL TÉCNICO:

PROPRIETÁRIO:
GOVERNO DO PIAUÍ

ENDEREÇO:
RUA SUCUPI, S/N, NAZARIA - PI

DESENHISTA:
PHABULLO HUDSON SOUSA ARAUJO

REVISÃO:

DATA:
11/07/21

ESCALA:
NO DESENHO

FORMATO:
A0 (841 x 1189)

CONTEÚDO:
PLANTA DE FORMA SUPERIOR.

Armação positiva das lajes do pavimento Superior (Eixo Y)

Armação positiva das lajes do pavimento Superior (Eixo X)